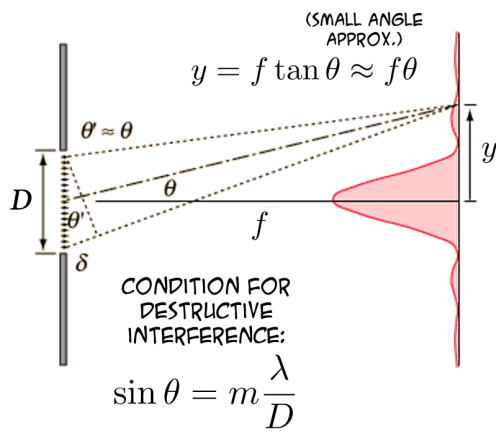
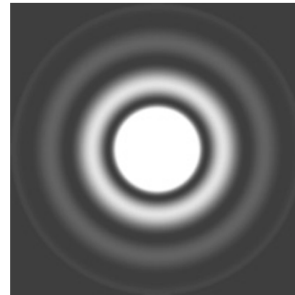


SINGLE SLIT INTERFERENCE PATTERN



AIRY DISK



CIRCULAR APERTURE DIFFRACTION PATTERN



well resolved

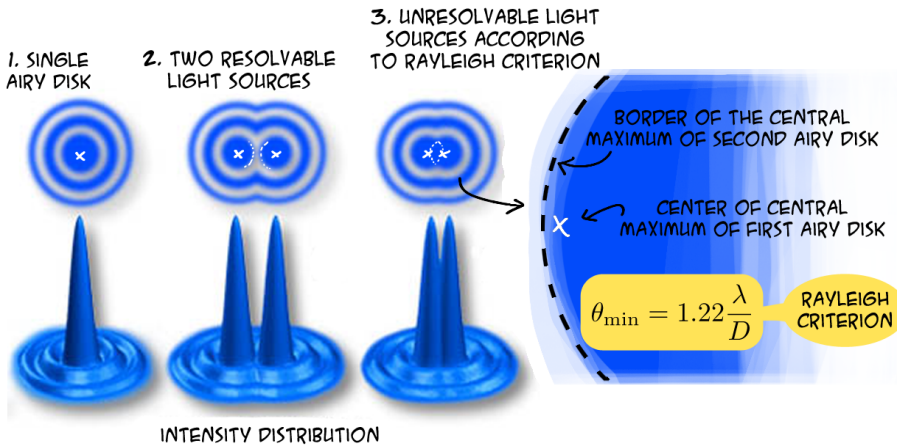
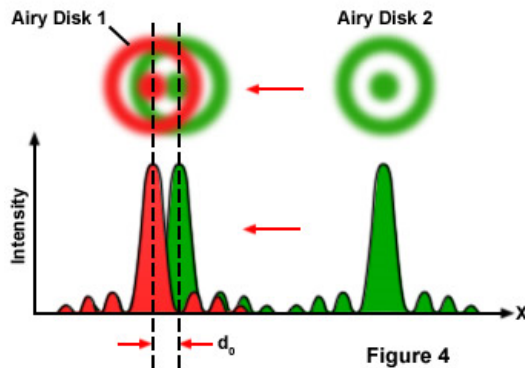


just resolved

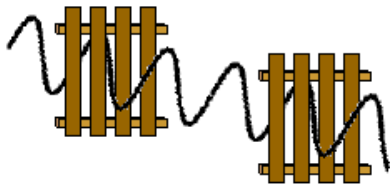


not resolved

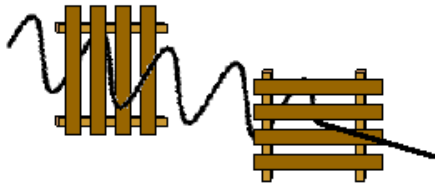
The Rayleigh Criterion



The Picket Fence Analogy



When the pickets of both fences are aligned in the vertical direction, a vertical vibration can make it through both fences.



When the pickets of the second fence are horizontal, vertical vibrations which make it through the first fence will be blocked.

